



Jewish Federation
of Southern New Jersey
& OUR FAMILY OF AGENCIES

“

SOUTH JERSEY
JEWISH
COMMUNITY
TRACKER

”

2021-2022



JEWISH FEDERATION CONTACT INFORMATION ● ● ●

856.751.9500 | jewishsouthjersey.org

Harold R. Isdamer Building | Weinberg Jewish Community Campus | 1301 Springdale Road, Suite 200 | Cherry Hill, NJ 08003

For questions about the Community Tracker, please contact Moriah Benjoseph Nassau at mhenjoseph@jfedsnj.org.

GLOSSARY / REFERENCE ● ● ●

THE JEWISH FEDERATION OF SOUTHERN NEW JERSEY (JFSNJ) - The Jewish Federation of Southern New Jersey and our family of agencies support those in need, enhances Jewish life, and ensures the continuity of a vibrant Jewish community locally, in Israel, and around the world.

JEWISH FEDERATION AGENCIES

- Katz Jewish Community Center (JCC)
- Jewish Community Relations Council (JCRC)
- Jewish Community Voice (JCV)
- Samost Jewish Family & Children's Service (JFCS)
- Jewish Senior Housing and Healthcare Service (JSHHS)
- Jewish Community Properties (JCP)

JEWISH FEDERATION SUPPORTING ORGANIZATIONS *(local foundations that support JFSNJ as part of their charter)*

- Raymond & Gertrude R. Saltzman Foundation (SF)
- Jewish Women's Foundation (JWF)
- Jewish Community Foundation, Inc. (JCF)

COMMUNITY TRACKER - A report created by the Jewish Federation solely based on responses from surveys emailed to synagogues, day schools, emergent organizations, and Jewish Federation agencies and supporting organizations. The Tracker is designed to foster conversation with the organized Jewish community of Southern New Jersey about trends, opportunities, patterns, and needs so that we can plan collectively.

DAY SCHOOLS - Schools designed to provide children with both Jewish and secular education. Ages: K-8 and high school.

SUPPLEMENTAL SCHOOLS - Schools providing children Jewish education after public day or private school studies. Ages: K-12

EARLY CHILDHOOD CENTER (ECC) - Early childhood education programs that serve children in the preschool years and/or kindergarten.

AREAS OF IMPACT - The Jewish Federation programs and services fall into five Areas of Impact: older adults, special needs, global connections, community engagement, and family & youth. Our Areas of Impact allow us to prioritize, fundraise, and leverage resources to capacity.

HELPFUL LINKS ● ● ●

jewishsouthjersey.org/welcomeleadership - A resource link for new leadership. Information on programs and services that are available to local organizations including more about the Federation and our family of agencies, grants and financial awards that are available, and marketing opportunities to promote upcoming events.

jlink-snj.org - Connect with our Jewish community programs and events through our video library and virtual live events.

jewishsouthjersey.org/reports - A link to the Community Tracker and other relevant materials.

CONTENTS ●●●

Community Tracker Background	2
Invited Organizations	2
Where We Are	3
Who We Are	3
Jewish Education	4-5
Supplemental Schools	4
Day Schools	4
Early Childhood Centers (ECC)	5
Jewish Federation of Southern New Jersey	6-12
Agencies	6-7
Success	8-9
Supporting Organizations/Funding/Grants	10-12
Diversity in Our Community	13



BACKGROUND

The Community Tracker, conducted by the Jewish Federation of Southern New Jersey (JFSNJ) asks qualitative and quantitative questions to learn about our community. Now in our fifth year, the information set forth in this summary is based solely on the information supplied by the organizations that responded to the survey.

Last year's report was a snapshot of our Jewish community during the height of the pandemic. We are now a year later and, while the effects of the pandemic are certainly still felt, the data shows a clear uptick in membership and engagement across the Jewish community. We are hopeful that this trend will continue as we continue to face the challenges of responding to the pandemic and making difficult choices to support the safety and wellbeing of our community. As we live through these unprecedented times, JFSNJ will continue to innovate, support community initiatives, and facilitate opportunities to strengthen our Jewish community.

INVITED ORGANIZATIONS & RESPONSE RATE



Synagogues

TOTAL INVITED 15 | RESPONDED* 11

Of the 15 synagogues invited, there were 11 respondents, a decrease from 13 respondents in the prior year.

Adath Emanu-El*	Congregation Sons of Israel*	Chabad Lubavitch of Camden and Burlington Counties*
Congregation Beth El*	Nafshenu	Chabad Gloucester County
Congregation B'nai Tikvah Beth Israel (CBTBI)*	Temple Beth Sholom (TBS)*	Temple Har Zion
Congregation Beth Tikvah*	Temple Emanuel*	Torah Links
Congregation Mkor Shalom*	Temple Sinai of Cinnaminson*	
	Young Israel of Cherry Hill*	



Day Schools

TOTAL INVITED 3 | RESPONDED 3

For the second consecutive year, all of the day schools invited to participate (100%) did so.

Foxman Torah Institute (FTI)	Kellman Brown Academy (KBA)	Politz Day School
------------------------------	-----------------------------	-------------------



Jewish Federation Agencies & Supporting Organizations

TOTAL INVITED 8 | RESPONDED 8

For the third consecutive year, there was a **100% response rate** from JFSNJ family of agencies and supporting organizations.

Katz Jewish Community Center (JCC)
Jewish Community Relations Council (JCRC)
Jewish Senior Housing and Healthcare Service (JSHHS)
Jewish Community Voice (JCV)
Jewish Family and Children's Service of Southern NJ (JFCS)

Jewish Community Foundation, Inc. (JCF)
Jewish Women's Foundation (JWF)
Raymond & Gertrude R. Saltzman Foundation (SF)

WHERE WE ARE ● ● ●

All invited organizations, which includes synagogues and day schools are located in the tri-county area and serviced by JFSNJ.

LOCATIONS OF JEWISH ORGANIZATIONS

Burlington County (5):

- Congregation Beth Tikvah
- Congregation Adath Emanu-El
- Chabad Lubavitch of Burlington County
- Temple Sinai of Cinnaminson
- Temple Har Zion

Camden County (12):

- Congregation M'kor Shalom
- Young Israel of Cherry Hill
- Temple Beth Sholom
- Nafshenu
- Congregation Beth El
- Temple Emanuel
- Torah Links of South Jersey
- Congregation Sons of Israel
- Chabad Lubavitch of Camden County

DAY SCHOOLS:

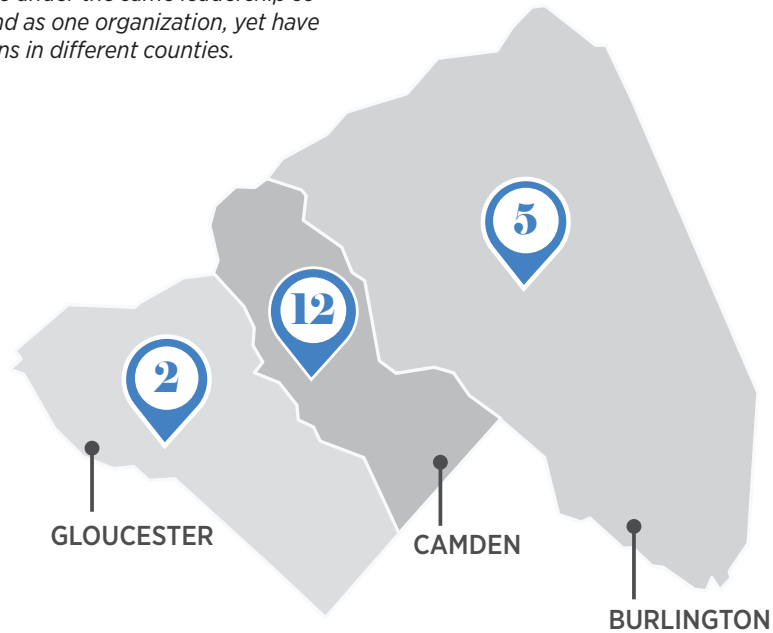
- Kellman Brown Academy
- Politz Day School
- Foxman Torah Institute

Gloucester County (2):

- Congregation B'nai Tikvah Beth Israel
- Chabad Gloucester County

Note: Chabad of Camden & Burlington Counties are under the same leadership so they respond as one organization, yet have two locations in different counties.

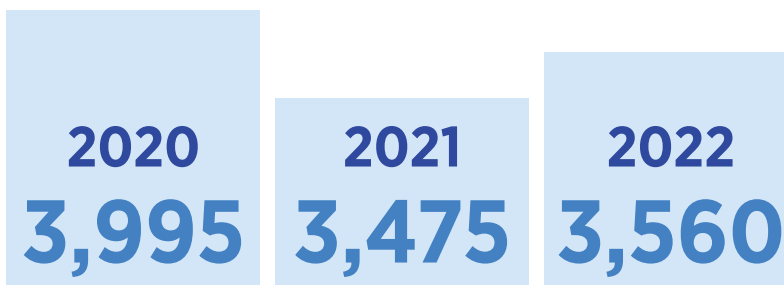
- 2022 - 19 TOTAL
- 2021 - 19 TOTAL
- 2020 - 20 TOTAL
- 2019 - 20 TOTAL
- 2018 - 21 TOTAL



WHO WE ARE ● ● ●

SYNAGOGUE HOUSEHOLD/FAMILY MEMBERSHIP:

Data shows changes in membership from 2021-2022 and is based on self-reported numbers from each organization that responded to the survey. Not all organizations completed all questions from the survey.



▲ 85
SYNAGOGUE HOUSEHOLD/
FAMILY MEMBERSHIPS

*From 2021 - 2022
there was an increase of 2.5%.*

TAKE AWAY: From 2020 - 2021 the synagogues that answered the membership questions saw a decrease of 520 household/family memberships and an individual decrease of 1,161 individual members. The COVID-19 pandemic was a significant factor in the decrease of family and individual members at our local synagogues. While membership numbers are not yet what they were pre-pandemic, they did increase by 85 household/family memberships from 2021-2022. Over the past two decades, historically, 10% of our community has attended day schools. We are optimistic to see this number continue to increase.

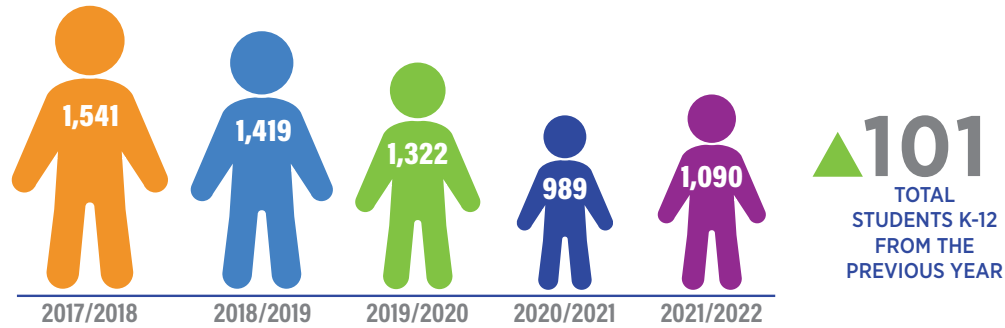
JEWISH EDUCATION ● ● ●

This section focuses on Jewish education for youth including supplemental schools, day schools and early childhood centers (ECC).

SUPPLEMENTAL SCHOOLS



The eight supplemental schools that responded are all affiliated with a synagogue. This continues to be the preferred choice of Jewish education. 18% of students enrolled in Jewish education are attending Jewish day schools and 82% of students are attending supplemental schools for Jewish education.



There are eight supplemental schools included in the 2021 results:

- Temple Beth Sholom Rabbi Albert and Sarah Lewis Religious School
- Temple Sinai Religious School
- Congregation B'nai Tikvah Beth Israel (CBTBI) Congregation Beth Tikvah
- M'kor Shalom Religious School
- Adath Emanu-El
- Beth El Religious School
- The Religious School at Temple Emanuel

Data for Special Needs Education at Supplemental Schools

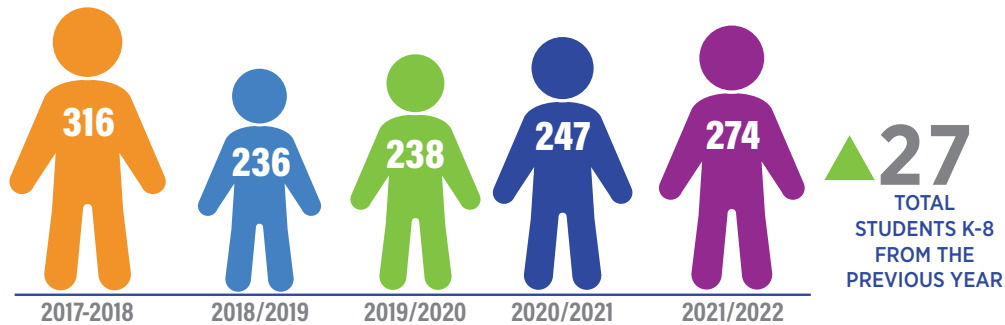


KEY TAKEAWAY: Last year, we concluded that the decline in supplemental school numbers from 2020-2021 was due to burnout with remote learning caused by the COVID-19 pandemic. We believe the increase this year is correlated. As supplemental schools return to in-person learning, more students have returned to the classroom as a result.

DAY SCHOOLS



Our community has two day schools (Kellman Brown Academy and Politz Day School) that offer grades K-8, and one high school (Foxman Torah Institute) for grades 9-12. As the majority of students are K-8, this data is reflected in the chart.



The number of K-12 day schools remains consistent in our community. Day schools saw a slight increase of 9 individual students in 2021. Last year, we concluded that this may have been due to the pandemic and that public school classes were virtual where-as the day schools offered in-person education. Schools continue to increase and retain the students that came as a result of COVID-19.

274

STUDENTS IN JEWISH DAY SCHOOLS (K-12)

1,090

STUDENTS IN SUPPLEMENTAL SCHOOLS (K-12)

STUDENTS ENROLLED IN JEWISH EDUCATION



20% attend Jewish day schools

80% attend supplemental schools

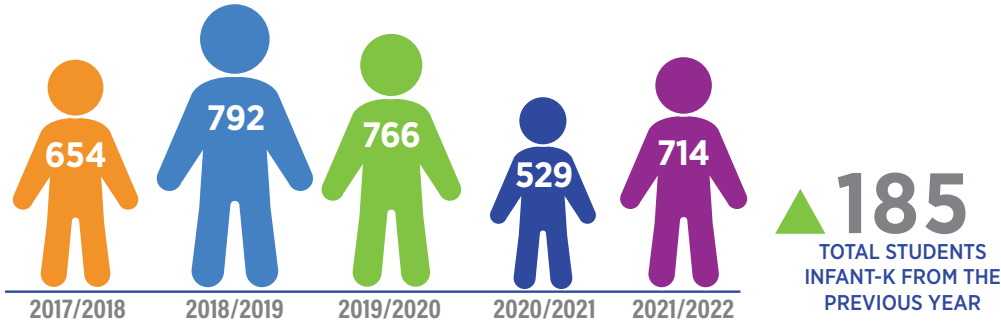
EARLY CHILDHOOD CENTERS (ECC)



Two early childhood centers are located in day schools, five are located in synagogues and one is at the JCC. All of the early childhood centers in our community include non-Jewish students, except for the ECC's at the Jewish day schools.

There are 8 early childhood centers in our community:

- Congregation Beth El ECC
- Adath Emanu-El
- The Pre-School at Temple Emanuel
- Kellman Brown Academy Eric B. Jacobs Early Childhood Education Center
- M'kor Shalom ECC
- Politz Day School
- Sari Isdaner Early Childhood Center



APPROX. **23%** NON-JEWISH STUDENTS
 IN 2021, APPROXIMATELY 37% IDENTIFIED AS NON-JEWISH.

KEY TAKEAWAY: Last year, we concluded that the decline in ECC numbers from 2020-2021 was due to the COVID-19 pandemic and more families keeping their children at home. We believe the increase this year is correlated. More parents are returning to full-time work and/or in-person work and require more child care.

This chart shows enrollment data starting with a Jewish education census in 2004 and compares it to data collected through our current enrollment.

	SUPPLEMENTAL AND DAY SCHOOL ENROLLMENT	EARLY CHILDHOOD CENTERS (ECC) ENROLLMENT
2003-2004	3,407	987
2009-2010	2,423	852
2013-2014	1,735	717
2017-2018	1,777	739
2018-2019	1,727	792
2019-2020	1,560	731
2020-2021	1,236	529
2021-2022	1,325	714

KEY TAKEAWAY: The decrease in enrollment numbers point to a change in demographics of the overall Jewish population in Southern New Jersey and is not necessarily a reflection of engagement levels overall.

JEWISH FEDERATION OF SOUTHERN NEW JERSEY

AGENCIES

The agencies of Jewish Federation are service providers. They work collaboratively with our synagogues and day schools, and there is always interest and opportunity to better align our efforts. Leveraging data from this report, we plan to foster more dialogue among all Jewish agencies and funding sources in our community.

- Katz Jewish Community Center (JCC)
- Jewish Senior Housing and Healthcare Service (JSHHS)
- Samost Jewish Family & Children's Service (JFCS)
- Jewish Community Relations Council (JCRC)
- Jewish Community Voice (JCV or The Voice)

Membership has significantly increased since last year, likely due to increased comfort with in-person events and programming, although it is still down by about 1/3 from pre-pandemic numbers.

Agency: JCC	2020-2021	2021-2022	
Household Memberships	2,962	6,250	111% Increase (▲3,288 Households)
Individual Memberships	9,562	13,800	44% Increase (▲4,238 Individuals)

Agency: JFCS	2020-2021	2021-2022	
Individuals Serviced	13,355	14,035	5.1% Increase (▲680 Individuals)

Agency: JCV	2020-2021	2021-2022	
Household Circulation	6,500	10,000	54% Increase (▲3,500 Households)

Agency: JSHHS	2020-2021	2021-2022	
Residents	408	449	10% Increase (▲41 Residents)

Agency: JCRC	2020-2021	2021-2022	
Households	300	500	67% Increase (▲200 Households)
Individuals	500*	1,500*	200% Increase (▲1,000 Individuals)

*Touch - This term may underestimate the actual impact. For some individuals, this might be one point of engagement, whereas others may have ongoing or multiple sources for engagement.

VOLUNTEER HOURS

Volunteers are a critical component of how Federation & our agencies maximize our impact. From October 2021-May 2022, our agencies had over 750 volunteers who put in over 1,600 hours of service to our community.

Counties with Individuals Impacted by JFSNJ Agencies	2021	2022
Burlington County	18.25%	22.75%
Camden County	71.72%	71.33%
Gloucester County	11.98%	10.75%

It has not been an easy few years. We are excited to share a few of the reported successes in our community. Kudos to all of us who have accomplished so much during such a challenging time. *Yasher Koach*

- Increased average membership across all synagogues
- Adult B'nai Mitzvah classes
- Continual increase of in-person learning for most of the year
- Increased enrollment--especially in early childhood
- Successful transition in rabbinic and other key leadership positions
- Increased collaboration with other Jewish organizations
- Offered new programming to fill the needs of community members during COVID-19
- Reimagined engagement as we support congregants with the new challenges of COVID-19
- Reconnecting with congregants as they returned to in-person programming
- Launch of the Jewish Community Voice app
- Grand opening of the Rhona Fischer Family Assistance Building
- Fundraising successes
- Highest camp enrollment at the JCC Camps at Medford since 2015
- Overall expansion and streamlining of our youth program to service a burgeoning youth department of 100+ children

Our community also continues to face challenges, many of which we saw repeated from multiple organizations in the tracker. Here are some of the challenges that were listed multiple times.

- Financial challenges
- Repairs to aging physical structures
- Rise in antisemitism/security concerns
- Successful acculturation and integration of new members
- Board and leadership development
- Lay/professional division of labor
- Staffing/cost of talent
- Social, emotional, and academic challenges of religious school students
- Membership retention
- Building a pipeline of lay leadership
- Need more space, more funding, and to reach more people
- Increased food insecurity
- Mental health challenges
- Increased costs of goods and services from electric to food
- Hesitancy of commitment of long-term to membership
- Behavior issues among students

New member needs/new trends

- There is a need for more support including
 - Diverse learning needs and styles, as well as a gap due to COVID-19
 - Social emotional gaps
 - Special services in early childhood
 - Anxiety and stress and other mental challenges present at epidemic proportions
- More diversity of background
- People are more “connected” than they have ever been. The majority have cell phones, iPads and/or computers. They access email and interact with loved ones electronically, which is very different from just 10 years ago. This leads to a culture of instantaneous everything and a desire for everything to be accessible on phone and computer
- Health and Safety concerns...what are our practices for keeping the building and our members safe
- An ongoing need for virtual programming
- Requests for activities for young adults, young families, and children.
- A need for Behaviorists are increasing

Collaboration opportunities

- Grant information and writing helpers would be great
- Community wide programming and activities and cooperative learning
- Supporting the learning gaps and providing social emotional behavioral support
- Early childhood special needs services
- More community wide collaboration including organizations outside of Cherry Hill
- Lobbying and Israel advocacy. These are areas that require more manpower that we unfortunately do not have at present.
- We continue to work with other agencies and departments of Federation to expand our digital reach, engage in collaborative financial ventures, and other projects
- Reduce food insecurity in the Jewish community
- Awareness and prevention education for our tweens and teens
- Disability services
- Special Ed programs
- Senior services
- Early childhood special needs services
- Desire to engage with the younger segment of the Jewish community

JEWISH FEDERATION OF SOUTHERN NEW JERSEY ●●●

SUPPORTING ORGANIZATIONS/FUNDING

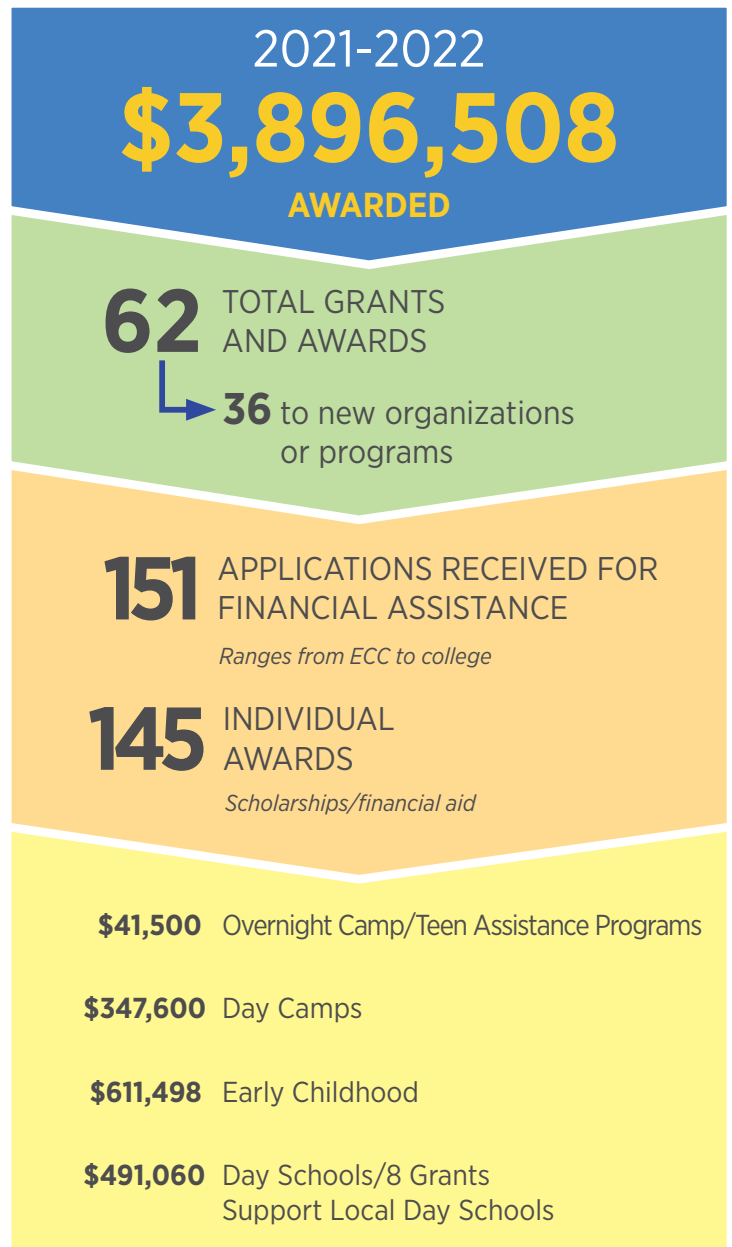
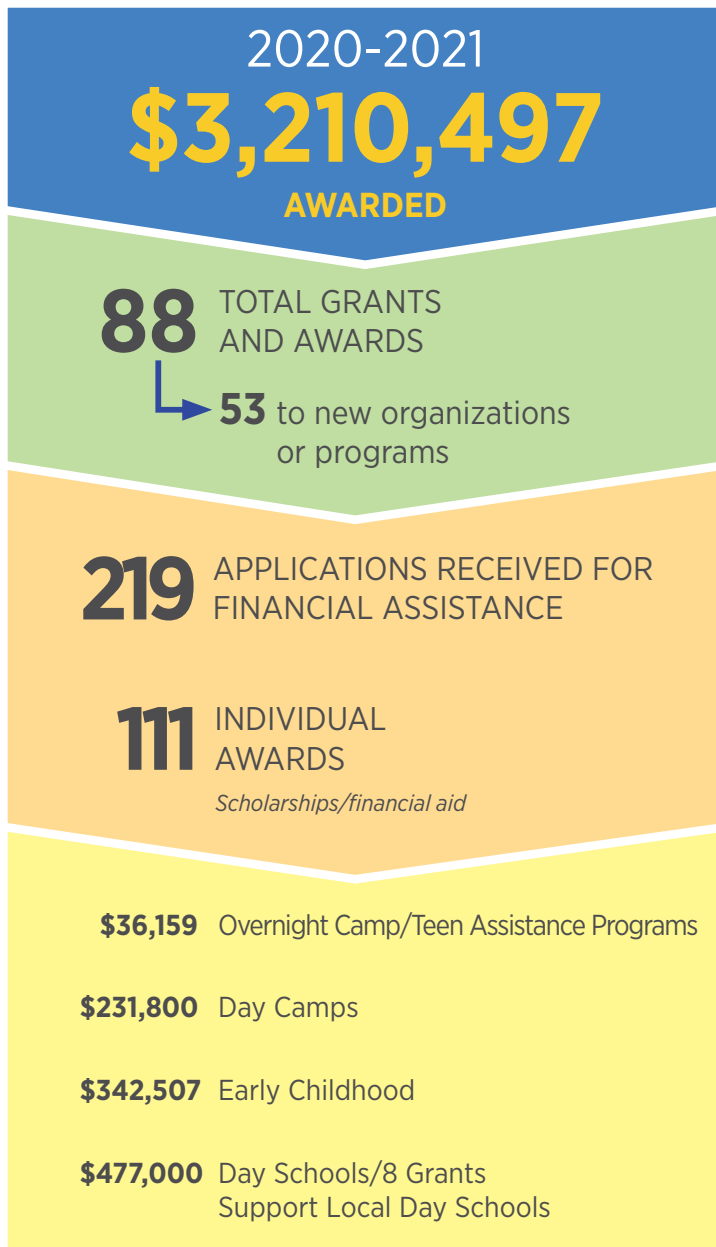
Several organizations offer grants, awards, and/or scholarships in our community. Below is information on the awards for the past year and how to learn more about each organization.

Supporting organizations:

- Jewish Community Foundation, Inc. (JCF)
- Jewish Community Properties (JCP)
- Raymond & Gertrude R. Saltzman Foundation (SF)

Jewish Federation distributed funds from the following sources:

- Jewish Federation of Southern New Jersey Financial Aid for Jewish Overnight Camp & Teen Leadership
- Jewish Women’s Foundation of Southern New Jersey (JWF)
- Community COVID-19 Relief Fund - fund offers temporary grants to alleviate some of the financial burden caused by the COVID-19 pandemic.



The Jewish Federation distributes its resources into five Areas of Impact. These Areas of Impact define our mission aligned priorities and how we serve our community, both locally and around the world.

In addition to awards given through our Areas of Impact, JCF has distributed additional dollars through the endowment and donor advised funds it manages on behalf of individuals and organizations.



Below is information on our local funding organizations including funding parameters, mission of the organization, and contact information.

RAYMOND & GERTRUDE R. SALTZMAN FOUNDATION

The Raymond & Gertrude R. Saltzman Foundation (“Foundation”) is a supporting organization of The Jewish Federation of Southern New Jersey (“Federation”). It is established to help qualifying recipients through grants in accordance with the wishes of Ruth Saltzman, while preserving and ideally growing the Foundation’s assets so that future generations can continue to benefit from Mrs. Saltzman’s generosity, in perpetuity. The Foundation encourages members of the community to create similar foundations in support of the Federation’s mission.

Grants may be awarded for services, programs, or activities in furtherance of the Jewish Federation’s mission and related to the following four (4) main purposes, in the Tri-County area:

- **IMPROVE LIVING CONDITIONS AND ALLEVIATE PROBLEMS OF JEWISH ELDERLY**
- **ASSISTANCE TO JEWISH CHILDREN AND FAMILIES:** Grants may be made to assist Jewish children and families who, because of economic problems or limited capabilities, are unable to achieve a standard of living which would enable them to participate in activities which the Federation considers reasonable.
- **ASSISTANCE TO JEWISH PERSONS OVERSEAS:** Grants to the Federation or directly to organizations eligible for support from the Federation may be considered to support and assist Jewish persons overseas and in Israel who require assistance, financial or otherwise, to live in security and participate adequately in the society in which they live.
- **ASSISTANCE TO EDUCATIONAL OR CULTURAL PROGRAMS UNDERTAKEN BY OR SUPPORTED BY THE FEDERATION**

Please contact Vicki Zell at vickizell@saltzmanfoundation.org for more information on applying for a grant or visit the application site saltzmanfoundation.smapply.io for deadlines and funding parameters.

JEWISH COMMUNITY FOUNDATION, INC.

JCF Grants: funding is available for nonprofits (including synagogues) aiming to launch new and innovative programs and services that are not a part of their existing budgets, in order to benefit residents of Burlington/Camden/Gloucester counties.

JCF Scholarship Awards: Funding is available to help defray the costs of local scholars’ post-high school educational endeavors.

The purpose of the Jewish Community Foundation, Inc. is to foster and facilitate sustainable philanthropy to support the mission of the Jewish Federation of Southern New Jersey and the needs of our Jewish community here, in Israel, and around the world. The JCF seeks to create a climate that supports funding of programs and organizations by involving agencies, synagogues, day schools, individuals, and families in the planning process. It strives to provide long-term funding vehicles for philanthropic action and education on philanthropic needs.

Please contact Mike Staff at mstaff@jfedsnj.org or 856.673.2528 for more information on applying for JCF Grants or visit jcfsnj.org/grants for deadlines and funding parameters.

JEWISH FEDERATION OF SOUTHERN NEW JERSEY

Scholarship for demonstrably financially-needy children to attend a Jewish early childhood program or Jewish overnight camp/teen Israel or leadership program. All camp and Israel programs must be sponsored by a recognized Jewish organization and provide Jewish and/or Zionist content as part of their programming. Must be residents of Burlington, Camden or Gloucester County.

Please contact Iris Snyder at isnyder@jfedsnj.org for more information on applying for financial assistance or visit jewishsouthjersey.org/financial-assistance.

JEWISH WOMEN'S FOUNDATION OF SOUTHERN NJ

This year's funding parameters changed due to the emergent needs of Covid-19 in our own community.. Grants were accepted from organizations in the tri-state area of South Jersey that addressed needs of women and children associated with Jewish poverty. i.e. food access, health care, housing education, job training and non profit sustainability.

Jewish Women's Foundation mission is to support funding programs and services that improve the lives of those who identify as Jewish females and children. Through strategic grant making, JWF addresses issues of importance to this population both locally and internationally. It also endeavors to empower women as funders, decision makers and agents of change.

Please contact Sarah Roland, Director of Women's Philanthropy, at srowland@jfedsnj.org or visit the website at jewishsouthjersey.org/jwf

JEWISH FEDERATION OF SOUTHERN NJ COVID-19 EMERGENCY RELIEF FUND (TEMPORARY)

Jewish community organizations in need of assistance due to the impact of COVID-19 were able to apply for emergency funding during FY 2020/2021. At this time, the Fund is not accepting new requests.

DIVERSITY IN OUR COMMUNITY ● ● ●

For the first time this year, we asked some questions to responding organizations about diversity in their community. Here are some of the responses.

Please tell us what diversity means to your organization:

- Diversity to our organization means making sure that our current members and those who have yet to join recognize that our community is a home for all Jews. When they are here, they will be accepted. When they are part of our community, they will be included. When they walk in the door, they are part of our community.
- Every member of our community has something to offer to build and strengthen our kehillah kedoshah, sacred community. We are proud to have congregants of all different background and households coming together, creating this sacred space and allowing for our synagogue to grow together.
- Servicing students from diverse backgrounds, educating and empowering students to embrace their identity and be proud of a community of diverse learners.

What are some steps your organization is taking to be more inclusive?:

- During the pandemic, two groups were launched - Achim Sheli for Jews of Color and Kavod for LGBTQ+ and allies. Our Board of Trustees and committee leadership has people from those groups as well to make sure their voice is part of our leadership and can impact awareness and change.
- Project Yahad, our program for individuals with special needs and their families, focuses on creating inclusive environments in all areas of our synagogue.
- Educating as to the importance of being a warm, welcome environment. This is accomplished through sermons, classes, and directed social programs.
- Reaching out to community organizations and inviting them to the school and partnering with them on events and projects.

Please tell us what changes you have seen in terms of diversity in your synagogue membership:

- We have Jews of color that are aware that our community is a good potential spiritual home for them. They come to us by direct recommendations, those that find us online and reputation. It is not as apparent when members are LGBTQ+, but we are aware that we have members joining or considering joining our community.
- We have a number of families and members with different backgrounds, and are seeing an increase in diverse family structures.